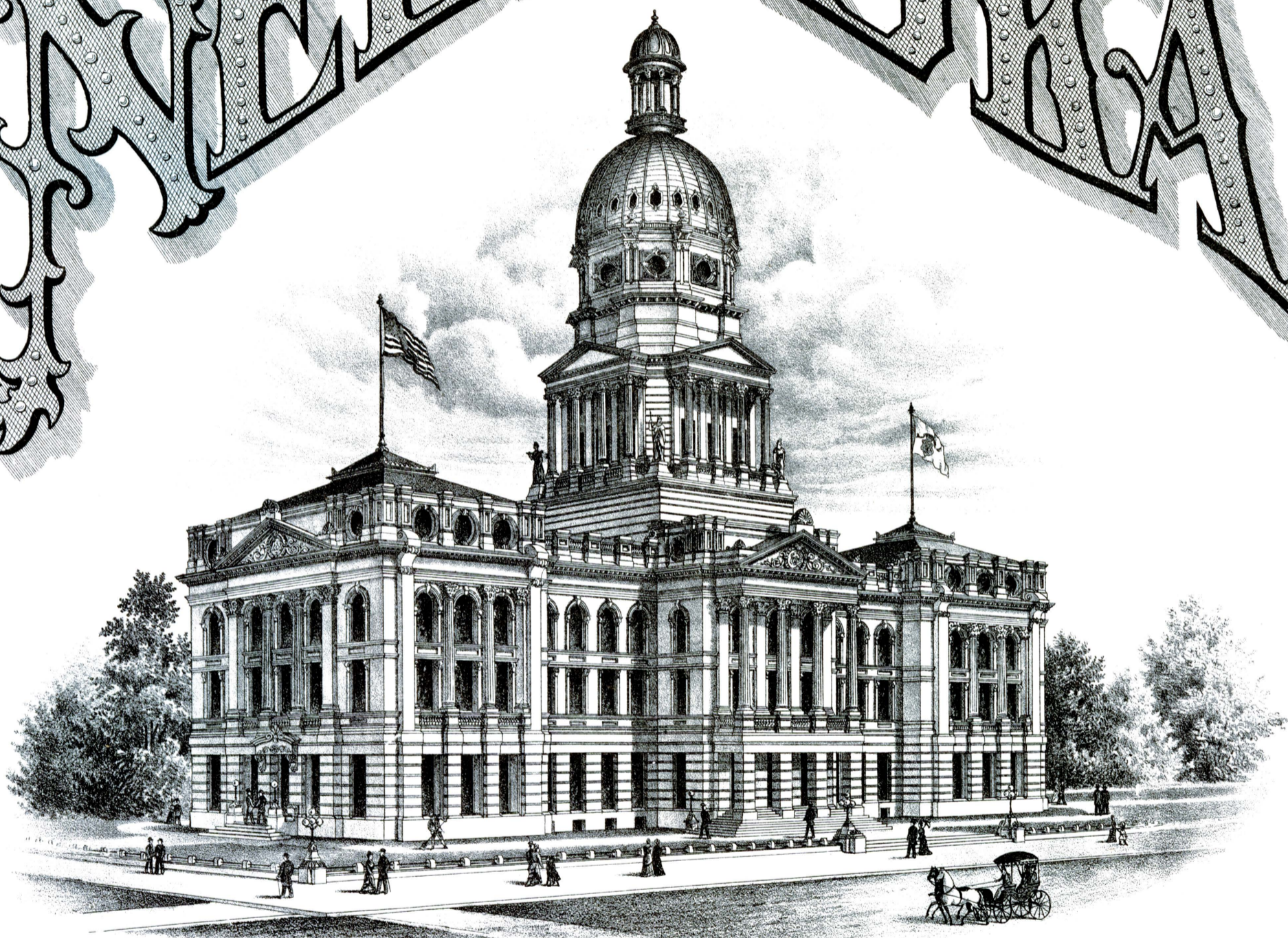


THE  
OFFICIAL STATE ATLAS OF

NEW BRUNSWICK



Compiled from Government Surveys  
County Records, and Personal  
Investigations.

PHILADELPHIA  
EVERTS & KIRK

1885.

# PREFACE.



THIS preface is not written for the purpose of offering in advance,—as authors and publishers often do,—an apology for errors and imperfections in the work which follows. To make such an apology is to admit a knowledge of inaccuracy and imperfection, which the publishers do not believe to exist to an extent worthy of notice, in the OFFICIAL STATE ATLAS OF NEBRASKA.

It has been prepared with the determination to make it as complete and as accurate as possible, and with this object in view, the patient and persevering labor of a large corps of surveyors and mappers for almost two years (equivalent to more than five years' work of one person) has been given to the preparation of this work, and it is now presented with full confidence that the verdict of its patrons will be one of approval.

The work embraces a general map of the State, showing the relative position of each County (as divided up to the adjournment of the State Legislature of 1885), the location of Railroads, Cities and Villages, the principal Streams and much topography, not heretofore obtainable. This is followed by separate maps of the different counties of the State drawn on a much larger scale, on which the details are more thoroughly given; there are also plans of the leading Cities and Villages throughout the State, which have been carefully prepared from the official records of each. To make reference to any County, City or Village, plain, simple and easy, the draughts have been placed in the work without reference to their location, and the whole indexed in alphabetical order.

In the preparation of these plans many perplexing difficulties have arisen, taxing to the utmost the skill of those engaged in the work. In some instances the early records have been only partially preserved or imperfectly kept, while in others they have been entirely destroyed—leaving us dependent upon the oldest residents for much necessary information, hence variation in names and dates may sometimes appear.

All the roads shown on the several county maps have been declared public highways, but many of them have not as yet been opened.

In placing the school-houses on the maps, the object has not been the exact location of the buildings, but to indicate the existence of the school districts and numbers, placing the buildings somewhere within said district as near the true location as possible. The Government Surveys have been followed in the compilation of each county, except where changes were found necessary, and reliable data for such alterations were obtainable.

Much information has been gleaned from conversations with the best informed people and oldest residents of the State, of whom a very large number have been called upon and consulted; and all, with a few exceptions, have fully and freely, to the extent of their ability, imparted the information sought. The number of those who have thus given us information is so great that it is impracticable to give them separate individual mention, but grateful thanks are here tendered to each and all for the assistance which they have extended. We desire especially to acknowledge the consideration and kindness of the State Officers, prominent among whom are the Surveyor-General and his assistants: the County Clerks and their deputies; Surveyors; Superintendents of Public Instruction; the county officers in general; and the press of the State.

The publishers desire to thank the citizens of the State of Nebraska for the support they have given the undertaking, and to assure them that in its production they have endeavored to merit their approval.

E. & K.

*Philadelphia, Pa., May, 1885.*

## CONTENTS.

PAGE		PAGE		PAGE	
Papillion, Sarpy County.....	164	Roca, Lancaster County.....	181	Stella, Richardson County.....	138
Pawnee County.....	45	Rock Creek, Cuming County.....	205	St. Libory, Howard County.....	175
Pawnee City, Pawnee County.....	43	Rouseville, Richardson County.....	138	St. Deroin, Nemaha County.....	140
Perth, Franklin County.....	32	Rulo, Richardson County.....	136	St. Edward's, Boone County.....	72
Peru, Nemaha County.....	144	Sacramento, Phelps County.....	46	St. Helena, Cedar County.....	96
Phelps County.....	47	Salem, Richardson County.....	133	St. Joe, Hamilton County.....	36
Phelps Center, Phelps County.....	46	Saltillo, Lancaster County.....	181	St. James, Cedar County.....	96
Phillips, Hamilton County.....	35	Saline County.....	121	St. Paul, Howard County.....	36
Pierce, Pierce County.....	77	Sargent, Custer County.....	149	State Map.....	6-7
Pierce County.....	76	Saronville, Clay County.....	110	Steele City, Jefferson County.....	38
Pilger, Stanton County.....	49	Sarpy County.....	160	Stratton, Hitchcock County.....	106
Platte County.....	97	Saunders County.....	66, 67	Stromsburg, Polk County.....	89
Platte Centre, Platte County.....	98	Schuyler, Colfax County.....	30	Stockville, Frontier County.....	202
Plattsmouth, Cass County.....	54, 55	Scotia, Greeley County.....	171	Stuart, Holt County.....	60
Pleasant Hill, Saline County.....	125	Scribner, Dodge County.....	83	Superior, Nuckolls County.....	75
Plainview, Pierce County.....	77	Seward, Seward County.....	93	Sutton, Clay County.....	111
Plum Creek, Dawson County.....	173	Seward County.....	94	Syracuse, Otoe County.....	129
Preston, Richardson County.....	133	Sherman County.....	69	Table Rock, Pawnee County.....	44
Polk County.....	91	Sheridan County.....	167	Talmage, Otoe County.....	130
Ponca, Dixon County.....	57	Shelby, Polk County.....	89	Tamora, Seward County.....	92
Potter, Cheyenne County.....	152½	Shelton, Buffalo County.....	169	Tecumseh, Johnson County.....	63
Powell, Jefferson County.....	39	Shubert, Richardson County.....	139	Tekamah, Burt County.....	13
Raymond, Lancaster County.....	180	Sidney, Cheyenne County.....	152½	Thayer, York County.....	103
Red Cloud, Webster County.....	80	Silver Creek, Merrick County.....	88	Thayer County.....	85
Red Willow County.....	204	Sioux County.....	166	Tobias, Saline County.....	126
Republican City, Harlan County.....	106	South Bend, Cass County.....	51	Ulysses, Butler County.....	102
Reynolds, Jefferson County.....	38	Springfield, Sarpy County.....	164	Unadilla, Otoe County.....	129
Richardson County.....	138, 139	Stanton County.....	48	Unorganized Territory.....	162, 163
Richland Post-Office, Colfax County.....	175	Stanton, Stanton County.....	49	Utica, Seward County.....	92
Risings, Butler County.....	102	Sterling, Johnson County.....	64	Valentine, Cherry County.....	120
Riverton, Franklin County.....	33			Valley, Douglas County.....	191
				Valley County.....	165
				Valparaiso, Saunders County.....	67
				Verdon, Richardson County.....	139
				Vinton, Valley County.....	164
				Waco, York County.....	105
				Wahoo, Saunders County.....	68
				Wakefield, Dixon County.....	57
				Washington County.....	17
				Waterloo, Douglas County.....	191
				Waverly, Lancaster County.....	180
				Wayne, Wayne County.....	23
				Wayne County.....	22
				Webster County.....	84
				Weeping Water, Cass County.....	53
				Western, Saline County.....	126
				Westerville, Custer County.....	149
				West Niobrara, Knox County.....	128
				West Point, Cuming County.....	207
				West Ulysses, Butler County.....	101
				West Union, Custer County.....	149
				Wheeler County.....	132
				Wilber, Saline County.....	125
				Wisner, Cuming County.....	207
				Woodlawn, Lancaster County.....	180
				Wood River, Hall County.....	189
				Wymore, Gage County.....	112
				Wyoming, Otoe County.....	129
				York County.....	104
				York, York County.....	103
				Yutan, Saunders County.....	67

## RECORDS OF THE ORGANIZATION AND OFFICERS OF COUNTIES.

WITH NAMES OF LEADING BUSINESS MEN AND LAND OWNERS.

PAGE		PAGE		PAGE	
Adams.....	16	Dixon.....	53	Jefferson.....	40
Antelope.....	28	Dodge.....	77	Johnson.....	62
Blaine.....	No record	Douglas.....	193, 198, 199, 200	Kearney.....	63
Boone.....	72	Dundy.....	No record	Keith.....	176
Brown.....	148	Fillmore.....	152	Keya Paha.....	No record
Buffalo.....	168	Franklin.....	31	Knox.....	125
Burt.....	41	Frontier.....	No record	Lancaster.....	180, 184
Butler.....	100	Furnas.....	202	Lincoln.....	109
Cass.....	48, 52	Gage.....	112	Logan.....	No record
Cedar.....	96	Garfield.....	No record	Loup.....	160
Chase.....	No record	Gosper.....	203	Madison.....	8
Cherry.....	124	Greeley.....	176	Merrick.....	88
Cheyenne.....	152	Hall.....	186	Nance.....	41
Clay.....	108	Hamilton.....	36	Nemaha.....	141
Colfax.....	29	Harlan.....	105	Nuckolls.....	73
Cumming.....	206	Hayes.....	No record	Otoe.....	128
Custer.....	160	Hitchcock.....	108	Pawnee.....	44
Dakota.....	28	Holt.....	60	Phelps.....	45
Dawes.....	No record	Howard.....	36	Pierce.....	73
Dawson.....	172				
				Platte.....	96
				Polk.....	92
				Red Willow.....	203
				Richardson.....	136, 140
				Saline.....	120, 124
				Sarpy.....	160
				Saunders.....	68
				Seward.....	94
				Sheridan.....	No record
				Sherman.....	69
				Sioux.....	No record
				Stanton.....	48
				Thayer.....	88
				Valley.....	165
				Washington.....	17
				Wayne.....	28
				Webster.....	88
				Wheeler.....	125
				York.....	104

## ILLUSTRATIONS.

PAGE		PAGE		PAGE	
Berggren, N. B., Residence and Stock Farm of.....	92	Ellsworth, E. A., Residence of.....	65	Loveless, Jane, Residence and Farm.....	113
Branson, Charles M., Stock Farm.....	137	Everts, Louis H., "Louiland Farms".....	136	Luther Academy, Wahoo, Neb.....	129
Burr, C. C., Residence of.....	187	Gibson, John, Sr., and Son's Residences.....	177	McDonald Stock Farm.....	64
Cady, Henry F., Residence of.....	112	Gilbert, George E., Residence of.....	105	Morrison, W. B., Residence of.....	180
Centennial Hotel, Tecumseh. Mrs. S. E. Ingraham.....	65	Greenamyre, A., Residence of.....	180	Petersen, Ernst, Residence of.....	160
Coffman, Dr. V. H., Residence of.....	190	Hafer, Levi, Residence of.....	93	Putney, Geo. J., Stock Farm.....	69
Convent of the Holy Child Jesus, Lincoln.....	183	Harvey, T. W., Residence of, and "Turlington Stock Farms".....	128	Richardson, George, Residence of.....	105
Crow & Bellows' Stock Farm.....	184	Hickmann, Rev. C. H., Residence of.....	176	St. Theresa's Catholic Church and Pastoral Residence, Lincoln.....	183
Dewey & Stone, Buildings.....	160	Hodges, J. G., Residence of.....	120	Schulz, James, Residence and Stock Farm.....	68
Dickinson Block, Wahoo, Neb.....	113	Jones, Claudius, & Son, Stock Farm.....	104	Sievers, Claus, Residence of.....	157
Dye, James R., Residence and Farm.....	113	Kilpatrick, J. D., Residence of.....	112	Skelton, John, Residence of.....	121
Eicke, Henry, Residence of.....	157	Lehmkuhl, J. D., Residence of.....	105	Smith, B. A. Residence of.....	156
				State Capitol.....	Title page
				State Insane Asylum.....	186
				State Penitentiary, Lincoln.....	181
				State University.....	186
				Stuhr, Marx, Residence of.....	191
				Tecumseh Roller Mills. James Hill, proprietor.....	121
				Te Poel, H. C., Residence and Farm.....	69
				Thomsen, John F., Residence and Farm.....	129
				Thurston, John M., Residence of.....	191
				Unitt, Philip, Residence of.....	93
				Van Derslice, A. M., Stock Farm.....	177
				Woolsey, George L., Residence of.....	121

# CONTENTS.

## INDEX TO COUNTIES AND TOWNS.

	PAGE		PAGE		PAGE		PAGE
Adams, Gage County.....	113	Cherry County.....	122, 123	Franklin County.....	31	Keya Paha County.....	146
Adams County.....	16	Chester, Thayer County.....	87	Franklin, Franklin County.....	32	Lancaster County.....	178, 179
Albion, Boone County.....	72	Cheyenne County.....	151, 152	Fremont, Dodge County.....	82	La Platte, Sarpy County.....	161
Alexandria, Thayer County.....	86	Clark's, Merrick County.....	89	Friend, Saline County.....	126	Leigh, Colfax County.....	30
Ainsworth, Brown County.....	148	Clay County.....	109	Frontier County.....	204	Lewisburg, Harlan County.....	106
Alma, Harlan County.....	105	Clay Center, Clay County.....	110	Fullerton, Nance County.....	42	Liberty, Gage County.....	115
Antelope County.....	27	Clearwater, Antelope County.....	28	Furnas County.....	204	Lincoln City, Lancaster County.....	182, 183, 184, 185
Antelopeville, Cheyenne County.....	152½	Colfax County.....	29	Gage County.....	118, 119	Lincoln County.....	117
Arborville, York County.....	102	Coleridge, Cedar County.....	96	Garfield County.....	132	Location of School Lands.....	7
Arapahoe, Furnas County.....	203	Columbus, Platte County.....	98, 99	Genoa, Nance County.....	42	Lodge Pole, Cheyenne County.....	148
Arlington, Washington County.....	21	Concord, Dixon County.....	57	Glen Rock, Nemaha County.....	140	Logan County.....	163
Ashland, Saunders County.....	68	Cortland, Gage County.....	115	Glenville, Clay County.....	111	Long Pine, Brown County.....	148
Atkinson, Holt County.....	61	Cowles, Webster County.....	80	Gibbon, Buffalo County.....	168	Louisville, Cass County.....	52
Auburn, Nemaha County.....	143	Cozad, Dawson County.....	169	Gosper County.....	204	Loup County.....	158
Aurora, Hamilton County.....	35	Crab Orchard, Johnson County.....	63	Gothenburg, Dawson County.....	169	Loup City, Sherman County.....	70
Avoca, Cass County.....	50	Craig, Burt County.....	12	Grand Island, Hall County.....	188, 189	Lyons, Burt County.....	13
Axtell, Kearney County.....	64	Crete, Saline County.....	124	Greeley County.....	177	Madison, Madison County.....	9
Ayr, Adams County.....	18	Creighton, Knox County.....	128	Greenwood, Cass County.....	52	Madison County.....	8
Bancroft, Cuming County.....	205	Covington, Dakota County.....	26	Guide Rock, Webster County.....	81	Malcolm, Lancaster County.....	181
Barneston, Gage County.....	113	Cummins, Wheeler County.....	133	Hadar, Pierce County.....	77	Manley, Cass County.....	51
Bassett, Brown County.....	148	Cuming County.....	206	Hall County.....	186	Marquette, Hamilton County.....	36
Battle Creek, Madison County.....	9	Custer County.....	154, 158	Hamilton County.....	34	Merrick County.....	90
Bazile Mills, Knox County.....	128	Dakota County.....	24	Hampton, Hamilton County.....	35	Merna, Custer County.....	149
Beatrice, Gage County.....	114, 115	Dale, Custer County.....	149	Hansen, Adams County.....	18	McCook, Red Willow County.....	202
Beaver City, Furnas County.....	203	Dakota City, Dakota County.....	25	Hardy, Nuckolls County.....	74	McPherson, Lincoln County.....	120
Bedford, Nemaha County.....	140	Dannebrog, Howard County.....	175	Harlan County.....	107	Milford, Seward County.....	92
Bellwood, Butler County.....	102	Davenport, Thayer County.....	86	Hartington, Cedar County.....	96	Millard, Douglas County.....	189
Belvidere, Thayer County.....	86	David City, Butler County.....	101	Hartwell, Kearney County.....	64	Minden, Kearney County.....	64
Bellevue, Sarpy County.....	161	Dawes County.....	166	Harvard, Clay County.....	111	Minerville, Otoe County.....	131
Bennett, Lancaster County.....	180	Dawson, Richardson County.....	140	Hastings, Adams County.....	19	Mount Vernon, Nemaha County.....	144
Benkelman, Dundy County.....	106	Dawson County.....	172	Hayes County.....	108	Myrtle, Custer County.....	149
Berlin, Otoe County.....	131	Decatur, Burk County.....	12	Hebron, Thayer County.....	87	Naponee, Franklin County.....	32
Blaine County.....	158	Delta, Otoe County.....	130	Herman, Washington County.....	21	Nance County.....	41
Blair, Washington County.....	20	Denton, Lancaster County.....	180	Hickmann, Lancaster County.....	180	Nebraska City, Otoe County.....	134, 135
Bloomington, Franklin County.....	33	Denver Junction.....	181	Hitchcock County.....	108	Neligh, Antelope County.....	28
Blue Hill, Webster County.....	81	Dewitt, Saline County.....	125	Holdrege, Phelps County.....	46	Nelson, Nuckolls County.....	74
Blue Springs, Gage County.....	113	Diller, Jefferson County.....	38	Holmesville, Gage County.....	113	Nemaha City, Nemaha County.....	145
Boone County.....	71	Dixon County.....	56	Homerville, Gosper County.....	203	Nemaha County.....	141
Bradshaw, York County.....	105	Dodge County.....	78	Holt County.....	58, 59	Newark, Kearney County.....	64
Brainard, Butler County.....	101	Doniphan, Hall County.....	189	Hooper, Dodge County.....	77	North Loup, Valley County.....	164
Brock, Nemaha County.....	145	Dorchester, Saline County.....	126	Hoskins, Wayne County.....	22	North Platte, Lincoln County.....	116
Broken Bow, Custer County.....	149	Douglas County.....	187	Howard County.....	37	Nickerson, Dodge County.....	83
Brown County.....	147	Dunbar, Otoe County.....	131	Hubbard, Dakota County.....	26	North Bend, Dodge County.....	79
Brownville, Nemaha County.....	142	Dundy County.....	108	Hubbell, Thayer County.....	86	Norfolk, Madison County.....	10
Buffalo County.....	170, 171	Edgar, Clay County.....	111	Humboldt, Richardson County.....	140	Nuckolls County.....	73
Burt County.....	14, 15	Elba, Howard County.....	175	Humphrey, Platte County.....	98	Oakdale, Antelope County.....	28
Burchard, Pawnee County.....	44	Elkhorn, Douglas County.....	189	Indianola, Red Willow County.....	202	Oakland, Burt County.....	13
Burnett, Madison County.....	10	Elk Creek, Johnson County.....	63	Inman, Holt County.....	61	Odell, Gage County.....	115
Burwell, Wheeler County.....	133	Elm Creek, Buffalo County.....	169	Jackson, Dakota County.....	26	O'Fallon's, Lincoln County.....	120
Butler County.....	100	Emerson, Dakota County.....	26	Jackson, Duncan P. O., Platte County.....	98	Ogalalla, Keith County.....	171
Calamus, Valley County.....	164	Endicott, Jefferson County.....	38	Jefferson County.....	40	Omaha and Winnebago Reservations.....	11
Cambridge, Furnas County.....	203	Ewing, Holt County.....	61	Johnson County.....	62	Omaha City and environs.....	200, 201
Carleton, Thayer County.....	86	Falls City, Richardson County.....	137	Johnson, Nemaha County.....	144	Omaha City... 192, 193, 194, 195, 196, 197, 198, 199	
Cass County.....	50, 51	Fairbury, Jefferson County.....	39	Johnstown, Brown County.....	148	O'Neill, Holt County.....	60
Cedar County.....	95	Fairfield, Clay County.....	110	Juniata, Adams County.....	18	Ord, Valley County.....	168
Cedar City, Wheeler County.....	133	Filley, Gage County.....	112	Kearney City, Buffalo County.....	174	Orleans, Harlan County.....	106
Cedar Rapids, Boone County.....	70	Firth, Lancaster County.....	181	Kearney County.....	65	Osceola, Polk County.....	89
Central City, Merrick County.....	88	Florence, Douglas County.....	190	Keith County.....	176	Otoe County.....	130, 131
Chapman, Merrick County.....	88	Fontanelle, Washington County.....	21	Kennard, Washington County.....	21	Overton, Dawson County.....	169
Chappell, Cheyenne County.....	152½	Fort Calhoun, Washington County.....	23	Kenesaw, Adams County.....	18	Oxford, Furnas County.....	205
Chase County.....	108	Fort Niobrara, Cherry County.....	120	Knox County.....	127	Palmyra, Otoe County.....	129

# HALL CO.

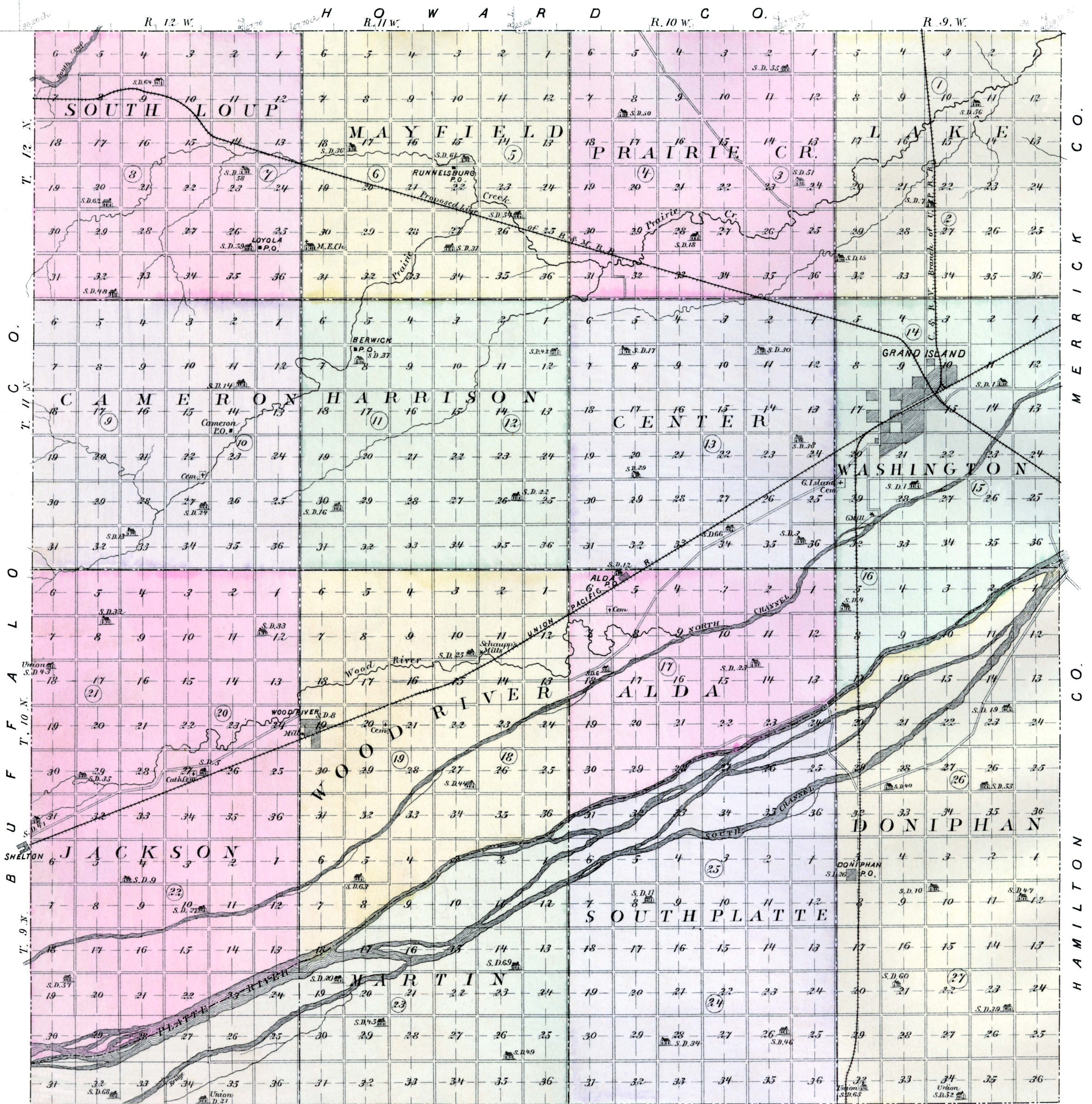


TABLE OF EXPLANATIONS

TOWNSHIP LINES	ROAD DISTRICTS	
SECTION LINES	SCHOOL DISTRICTS	
QUARTER SECTION LINES	CEMETERIES	
RAIL ROADS	MARSHES	
RAIL ROADS INCOMPLETE	STREAMS	
PUBLIC ROADS	POST OFFICES	

I have examined the above map and find the same to be accurately & carefully computed.

*Frank Sears*  
County Clerk

# HALL COUNTY.

## ORGANIZATION, RECORD OF COUNTY OFFICIALS AND OTHER STATISTICAL MATTER PERTAINING TO HALL COUNTY.

Hall County was organized in 1858.<sup>2</sup> Population from the Secretary of State's Report: 1860, 116; 1870, 1057; 1875, 4414; 1880, 8562; 1884, estimated on Presidential vote, 13,475.

TERMS OF OFFICE.	TREASURER.	CLERK.	CLERK DISTRICT COURT.	SHERIFF.	COUNTY JUDGE.	COMMISSIONERS.	SUPERINTENDENT PUBLIC INSTRUCTION.	COUNTY SURVEYOR.	CORONER.
1859	Isaac Thomas . . . . .	Theodore F. Nagel . . . . .	Theodore F. Nagel . . . . .	Herman Vasold . . . . .	Richard C. Barnard . . . . .	Frederick Hedde, Daniel B. Crocker, Hans Vierigg . . . . .		Richard C. Barnard	
1860	Isaac Thomas . . . . .	Theodore F. Nagel . . . . .	Theodore F. Nagel . . . . .	Herman Vasold . . . . .	Richard C. Barnard . . . . .	James Vierigg, Henry Egge, Hans Wrage . . . . .		Richard C. Barnard	
1861	Isaac Thomas . . . . .	Theodore F. Nagel . . . . .	Theodore F. Nagel . . . . .	Herman Vasold . . . . .	R. C. Barnard, Fred Hedde . . . . .	James Vierigg, Henry Egge, Hans Wrage . . . . .		Richard C. Barnard	
1862	Charles Anderson . . . . .	Fred Evans . . . . .	Fred Evans . . . . .	Joseph T. Rease . . . . .	Fred Hedde . . . . .	Hans Wrage, Henry Egge . . . . .		No record	
1863	Charles Anderson . . . . .	Fred Evans . . . . .	Fred Evans . . . . .	Joseph T. Rease . . . . .	Fred Hedde . . . . .	Theodore F. Nagel, Hans Wrage . . . . .		No record	
1864	Charles Anderson . . . . .	Fred Evans . . . . .	Fred Evans . . . . .	Joseph T. Rease . . . . .	J. D. Schuler . . . . .	Theodore F. Nagel, Hans Wrage . . . . .		No record	
1865	Charles Anderson . . . . .	Fred Evans . . . . .	Fred Evans . . . . .	Joseph T. Rease . . . . .	J. D. Schuler . . . . .	Hans Wrage, Theodore F. Nagel . . . . .		No record	
1866	Henry A. Koenig . . . . .	Fred Evans . . . . .	Fred Evans . . . . .	A. Thorspecken . . . . .	W. H. Mitchell . . . . .	Hans Wrage, A. Thorspecken . . . . .		No record	
1867	Henry A. Koenig . . . . .	Fred Evans . . . . .	Fred Evans . . . . .	A. Thorspecken . . . . .	W. H. Mitchell . . . . .	C. H. Von Wasmer, A. Thorspecken, H. Wrage . . . . .		No record	
1868	Henry A. Koenig . . . . .	John Wallicks . . . . .	John Wallicks . . . . .	A. Thorspecken . . . . .	W. H. Platt (app.) . . . . .	C. H. Von Wasmer, Hans Wrage, James Jackson, Fred A. Wiebe . . . . .	Enos Beall . . . . .	Hugo Hald	
1869	Henry A. Koenig . . . . .	John Wallicks . . . . .	John Wallicks . . . . .	A. Thorspecken . . . . .	W. H. Platt . . . . .	Hans Wrage, James Jackson, Fred A. Wiebe . . . . .	Enos Beall . . . . .	Hugo Hald	
1870	Fred A. Wiebe . . . . .	John Wallicks . . . . .	John Wallicks . . . . .	Hugo Hald . . . . .	Enos Beall . . . . .	Hans Wrage, James Jackson, Edward Hooper . . . . .	John Wallicks . . . . .	Hugo Hald	
1871	Fred A. Wiebe . . . . .	John Wallicks . . . . .	John Wallicks . . . . .	Hugo Hald . . . . .	Enos Beall . . . . .	Hans Wrage, James Jackson, Edward Hooper . . . . .	John Wallicks . . . . .	Hugo Hald	
1872	{ Charles Ruelburg } { William Hagge } . . . . .	John Wallicks . . . . .	John Wallicks . . . . .	W. M. Speker . . . . .	W. H. Platt . . . . .	James Jackson, Edward Hooper, George Cornelius . . . . .	John Wallicks . . . . .	Hugo Hald	A. Thorspecken.
1873	William Hagge . . . . .	John Wallicks . . . . .	John Wallicks . . . . .	W. M. Speker . . . . .	W. H. Platt . . . . .	Edward Hooper, George Cornelius, James Jackson . . . . .	John D. Hayes . . . . .	Eli Barnes . . . . .	A. Thorspecken.
1874	William Hagge . . . . .	John Wallicks . . . . .	John Wallicks . . . . .	William A. Deuel . . . . .	W. H. Platt . . . . .	George Cornelius, James Jackson, Edward Hooper . . . . .	John D. Hayes . . . . .	A. F. Wilgoeki . . . . .	A. Thorspecken.
1875	William Hagge . . . . .	John Wallicks . . . . .	John Wallicks . . . . .	William A. Deuel . . . . .	W. H. Platt . . . . .	Edward Hooper, James Jackson, Peter Harrison . . . . .	John D. Hayes . . . . .	A. F. Wilgoeki . . . . .	B. B. Kelley.
1876	William Hagge . . . . .	John Wallicks . . . . .	John Wallicks . . . . .	William A. Deuel . . . . .	John D. Hayes . . . . .	James Jackson, Peter Harrison, George Cornelius . . . . .	Henry Nunn . . . . .	A. F. Wilgoeki . . . . .	Lucius E. Tenik.
1877	William Hagge . . . . .	John Wallicks . . . . .	John Wallicks . . . . .	William A. Deuel . . . . .	John D. Hayes . . . . .	G. Cornelius, Z. B. Partridge, J. Jackson, C. D. M. Washburn . . . . .	Henry Nunn . . . . .	{ A. F. Wilgoeki } { Charles Rief } { S. E. Reaugh } . . . . .	Lucius E. Tenik. Henry F. D. Bruhns.
1878	William Hagge . . . . .	John Wallicks . . . . .	John Wallicks . . . . .	Joseph Kilian . . . . .	T. O. C. Harrison . . . . .	Z. B. Partridge, W. H. West, P. Nevills . . . . .	James Ewing . . . . .	{ S. E. Reaugh } . . . . .	Henry F. D. Bruhns.
1879	William Hagge . . . . .	John Wallicks . . . . .	John Wallicks . . . . .	Joseph Kilian . . . . .	T. O. C. Harrison . . . . .	W. H. West, P. Nevills, Z. B. Partridge . . . . .	James Ewing . . . . .	S. E. Reaugh . . . . .	Henry F. D. Bruhns.
1880	George Cornelius . . . . .	Charles Rief . . . . .	Charles Rief . . . . .	Joseph Kilian . . . . .	T. O. C. Harrison . . . . .	P. Nevills, Z. B. Partridge, W. H. West . . . . .	James Ewing . . . . .	Hugo Hald . . . . .	A. L. Stevenson.
1881	George Cornelius . . . . .	Charles Rief . . . . .	Charles Rief . . . . .	Joseph Kilian . . . . .	T. O. C. Harrison . . . . .	Z. B. Partridge, W. H. West, Joel P. Goodrich . . . . .	James Ewing . . . . .	Hugo Hald . . . . .	A. L. Stevenson.
1882	George Cornelius . . . . .	Frank Sears . . . . .	Frank Sears . . . . .	Henry C. Denman . . . . .	George H. Caldwell . . . . .	Z. B. Partridge, Joel P. Goodrich, S. S. Shultz . . . . .	D. H. Vantine . . . . .	Hugo Hald . . . . .	David Ackerman.
1883	George Cornelius . . . . .	Frank Sears . . . . .	Frank Sears . . . . .	Henry C. Denman . . . . .	George H. Caldwell . . . . .	Joel P. Goodrich, S. S. Shultz, W. W. Mitchell . . . . .	D. H. Vantine . . . . .	Hugo Hald . . . . .	David Ackerman.
1884	Edward Hooper . . . . .	Frank Sears . . . . .	John Allan . . . . .	James Cannon . . . . .	George H. Caldwell . . . . .	Township Organization <sup>1</sup> . . . . .	D. H. Vantine . . . . .	Z. H. Denman . . . . .	David Ackerman.

<sup>1</sup> First meeting November 21, 1883. Township organization adopted in fall of 1883.  
<sup>2</sup> First officers appointed by Territorial Governor.  
 Note.—The early records of the county are very defective, so that it is impossible to obtain full and accurate statistics of county officers. No record of any proceeding or action of county commissioners previous to 1866, and only meagre, scattered and fragmentary evidence of the names of any of the county officials, even, for the first seven years after the county was organized, and the memory of the oldest inhabitant cannot furnish the missing links, and men who have held office have forgotten the facts, and when questioned answer with a dazed, bewildered look: "Well, I can't quite remember; but it seems to me that I was judge once,—not sure,—let me see; yes, I believe—yes—yes, I think was one term way back."

### NAMES OF LEADING BUSINESS AND PROFESSIONAL MEN IN HALL COUNTY, WHO HAVE AIDED IN THE PUBLICATION OF THE OFFICIAL STATE ATLAS OF NEBRASKA.

**Henry A. Koenig.**—President Citizen's National Bank. Native of Prussia. Settled in 1860. P. O., Grand Island.  
**West & Schlotfeldt.**—Real Estate and Insurance. Natives of New York and Germany. Settled in 1869 and 1877. P. O., Grand Island.  
**S. N. Wolbach.**—President First National Bank. Native of New York. Settled in 1874. P. O., Grand Island.  
**First National Bank.**—S. N. Wolbach, President; Chas. F. Bentley, Cashier. P. O., Grand Island.  
**Thummel & Platt.**—Law and Real Estate. P. O., Grand Island.  
**Grand Island Banking Co.**—S. A. Peterson, President; J. P. Kernohan, Cashier. P. O., Grand Island.  
**Fred'k Hedde.**—*Daily and Weekly Independent.* Native of Germany. Settled in 1857. P. O., Grand Island.  
**J. G. Schaupp & Son.**—Roller Mill and Elevator. Nativity, Germany. Settled in 1873. Proprietors Planet Roller Mills; all grades of roller flour manufactured. P. O., Grand Island.  
**Chas. Wasmer.**—Grain and Agricultural Implements. Native of Germany. Settled in 1862. P. O., Grand Island.  
**Henry Glade.**—Glade's Roller Mill and Elevator. Native of Germany. Settled in 1878. All grades of roller flour manufactured. P. O., Grand Island.  
**Abbott & Breckenridge.**—Attorney-at-Law and Insurance. Natives of Illinois. Settled in 1867. P. O., Grand Island.  
**Harrison & Rief.**—Loan, Law and Land Office. P. O., Grand Island.  
**E. W. Justice.**—Real Estate and Loan. Native of Illinois. Settled in 1881. P. O., Grand Island.  
**R. C. Glanville.**—Attorney-at-Law. Native of Illinois. Settled in 1872. P. O., Grand Island.  
**Frank Sears.**—County Clerk. Native of New York. Settled in 1870. P. O., Grand Island.  
**Henry Garn.**—Publisher *Der Herold.* Native of Germany. Settled in 1866. P. O., Grand Island.  
**Gustave Koehler.**—Ice Dealer. Native of Germany. Settled in 1867. P. O., Grand Island.  
**L. Myers.**—Coal Dealer. Native of New York. Settled in 1876. P. O., Grand Island.

**James Cannon.**—County Sheriff. Native of New York. Settled in 1871. P. O., Grand Island.  
**Goodman, Bogue & Co.**—G. W. Houck, Manager. Lumber Dealers. Natives of New York. Settled in 1873. P. O., Grand Island.  
**John W. Lambert.**—Locomotive Engineer. Native of Ohio. Settled in 1869. Owns 200 acres of land adjoining city. P. O., Grand Island.  
**Geo. Bartenbach.**—Wall Paper, Paints and Oils. Native of Germany. Settled in 1878. Owner of Bartenbach's Opera House. P. O., Grand Island.  
**Chas. A. Wiebe.**—Dry Goods, Boots and Shoes. Native of Iowa. Settled in 1862. P. O., Grand Island.  
**Mrs. C. Boehm Ott.**—Proprietor State Central Brewery. Native of Germany. Settled in 1872. Manufacturer and shipper of beer. P. O., Grand Island.  
**C. D. Meves.**—Coal Dealer. Native of Germany. Settled in 1866. P. O., Grand Island.  
**Peter Heintz.**—Agricultural Implements, Wind Mills and Pumps. Native of Germany. Of the firm of Heintz & Sothmann. P. O., Grand Island.  
**Geo. Cornelius.**—Real Estate. Native of Germany. Settled in 1864. P. O., Grand Island.  
**Hugo Oehlich.**—Anhuesser Busch Brewing Co. Native of Germany. Settled in 1872. P. O., Grand Island.  
**Geo. F. Palmer.**—Horse and Sale Stables. Native of Pennsylvania. Settled in 1879. P. O., Grand Island.  
**Eggers Bros.**—Butchers and Packers. Native of Germany. Settled in 1870. P. O., Grand Island.  
**Oscar Roeser.**—Grocer. Native of Michigan. Settled in 1877. Of the firm of Veit & Roeser; Dealers in groceries of all kinds. P. O., Grand Island.  
**Capt. J. B. Jordan.**—Proprietor of the Jordan House. Native of Maine. Settled in 1874. New brick hotel, first-class in every respect. P. O., Grand Island.  
**I. L. Meseraull.**—Grain Dealer, etc. P. O., Doniphan.  
**Burger & McCulloch.**—General Merchants. Natives of Virginia. Settled in 1877. P. O., Doniphan.  
**Scudder Bros.**—Livery and Sale Stables. Natives of Indiana. Settled in 1880. P. O., Doniphan.

**W. E. Moore.**—Hardware and Tin. Native of Pennsylvania. Settled in 1880. P. O., Doniphan.  
**Jno. W. Burg.**—Druggist. Native of Indiana. Settled in 1859. P. O., Doniphan.  
**I. C. Hughs.**—Minister. Native of Wales. Settled in 1883. One hundred and sixty acres of land. P. O., Doniphan.  
**J. W. Joice.**—General Merchant. Native of Virginia. Settled in 1877. P. O., Doniphan.  
**W. H. Gideon.**—General Merchandise. Native of Illinois. Settled in 1875. P. O., Doniphan.  
**Wood River Bank.**—W. B. Hollister, President; H. B. Welles, Vice-President; C. H. Bell, Cashier. Real Estate and Loans Negotiated, etc. P. O., Wood River.  
**Fred. W. Gray.**—(J. H. Little, Manager). Lumber and Lime. Native of Ohio. Settled in 1883. P. O., Wood River.  
**W. & F. Thorp.**—Atlantic Mills. Natives of Ohio. Settled in 1881. Manufacturers all grades of roller flour and exchange work. P. O., Wood River.  
**John O'Connor.**—Lumber and Lime. Native of England. Settled in 1870. Dealer in hair, cement and building materials. P. O., Wood River.  
**Jas. Williams.**—Livery and Sale Stable. Native of Ohio. Settled in 1864. P. O., Wood River.  
**Jas. Ewing.**—Publisher of *Wood River Gazette.* Native of New York. Settled in 1871. P. O., Wood River.  
**R. H. Dodd.**—Grain and Live Stock. Native of Illinois. Settled in 1879. P. O., Wood River.  
**A. G. Hollister.**—General Merchandise. Native of Connecticut. Settled in 1872. Dry goods, groceries, queensware and postmaster. P. O., Wood River.  
**Thos. Langan.**—General Merchandise. Native of Pennsylvania. Settled in 1878. Clothing and gents' furnishing goods. P. O., Wood River.  
**Ward D. Fuller.**—U. P. Railroad Agent. Native of Illinois. Settled in 1879. Agent for Lefling & McCall's addition to Wood River. P. O., Wood River.  
**John Brett.**—Native of Ireland. Settled in 1866. Dealer in malt and spirituous liquors. P. O., Wood River.

### A RECORD OF THE FARMS OF LEADING FARMERS AND LAND OWNERS IN HALL COUNTY WHO HAVE ASSISTED IN THE PUBLICATION OF THE OFFICIAL STATE ATLAS OF NEBRASKA.

**F. C. Dodge.**—S. 7, 18+, T. 10, R. 11; 2800 a., pur. in 1866; est. val., \$56,000. Cattle, Sheep and Hog Ranch. P. O., Wood River.  
**G. F. Dodge.**—S. 17, T. 10, R. 11; 240 a., pur. in 1868; est. val., \$7200. Durham Cattle and Poland China Hogs. P. O., Wood River.  
**Stephen Jones.**—S. 8, T. 10, R. 11; 400 a., pur. in 1871; est. val., \$12,000. Graded Cattle and Berkshire Hogs. P. O., Wood River.  
**Joseph Roach.**—S. 12, 13, T. 10, R. 11; 160 a., pur. in 1876; est. val., \$4800. Berkshire and Poland China Hogs. P. O., Alda.  
**Bonsen Bros.**—S. 3, 34, T. 10, R. 11; 324 a., pur. in 1868; est. val., \$10,720. Short Horn Cattle and Berkshire Hogs. P. O., Wood River.

**Henry Lübs.**—S. 35, 36, T. 10, R. 11; 160 a., pur. in 1874; est. val., \$4800. Short Horn Cattle and Berkshire Hogs. P. O., Grand Island.  
**Hans Wiese.**—S. 27, 33, 34, T. 10, R. 11; 370 a., pur. in 1871; est. val., \$11,000. Graded Cattle and Poland China Hogs. P. O., Wood River.  
**Peter Holling.**—S. 33, T. 10, R. 11; 310 a., pur. in 1869; est. val., \$9300. Graded Cattle and Berkshire Hogs. P. O., Wood River.  
**David Barrick.**—S. 30, T. 10, R. 11; 164 a., pur. in 1871; est. val., \$5740. Polled Angus and Durham Cattle and Berkshire Hogs. P. O., Wood River.

**John S. Donaldson.**—S. 10, T. 10, R. 11; 163 a., pur. in 1868; est. val., \$6500. Grain and Stock Raiser. P. O., Wood River.  
**F. N. Taylor.**—S. 15, T. 10, R. 11; 130 a., pur. in 1881; est. val., \$4500. Grain, Stock and Fruit Grower. P. O., Wood River.  
**J. M. Arnold.**—S. 29, T. 10, R. 11; 80 a., pur. in 1881; est. val., \$3000. Grain and Stock Raiser. P. O., Wood River.  
**G. L. Rouse.**—S. 19, T. 11, R. 10; 640 a., pur. in 1872; est. val., \$16,000. Graded Durham Cattle, Full-blooded Poland China Hogs, Grain and Stock Grower. P. O., Grand Island.  
**Jacob Shoemaker.**—S. 19, 23, T. 11, R. 10; 320 a., pur. in 1873; est. val., \$8000. Grain and Stock Raiser and Fruit Grower, ten hundred and forty bearing Apple Trees. P. O., Grand Island.

## HALL COUNTY.—CONTINUED.

**Edwin S. Lee.**—S. 27, T. 11, R. 12; 320 a., pur. in 1872; est. val., \$9000. Graded Cattle, Berkshire Hogs and Grain Raiser. P. O., Cameron.

**Joel P. Goodrich.**—S. 23, 26, T. 11, R. 12; 200 a., pur. in 1873; est. val., \$6000. Norman Horses, Graded Cattle and Berkshire Hogs. P. O., Cameron.

**F. W. Dodd.**—S. 15, T. 11, R. 12; 160 a., pur. in 1873; est. val., \$6000. Graded Cattle, Berkshire Hogs and Fruit Grower. P. O., Cameron.

**C. S. Benton.**—S. 12, T. 11, R. 12; 160 a., pur. in 1872; est. val., \$6000. Hambletonian, Clydesdale and Morgan Horses, Berkshire Hogs. P. O., Cameron.

**Seth Lee.**—S. 20, 28, 29, T. 11, R. 12; 1280 a., pur. in 1872; est. val., \$38,400. Durham Cattle, Berkshire and Poland China Hogs, Grain and Fruit Grower. P. O., Wood River.

**Jacob F. Miller.**—S. 16, 21, T. 11, R. 12; 800 a., pur. in 1878; est. val., \$16,000. Breeder of Thoroughbred Durham Cattle, High Grade Norman Horses, Full-blooded Berkshire Hogs and Poland China Mixed Hogs. P. O., Cameron.

**Gilbert Hurd.**—S. 2, T. 11, R. 12; 160 a., pur. in 1876; est. val., \$5000. Berkshire Hogs, Grain, Stock and Fruit Grower. P. O., Loyola.

**Col. E. H. Leib.**—S. 27, T. 11, R. 12; 320 a., pur. in 1870; est. val., \$7700. P. O., Grand Island.

**Eberhart Kunz.**—S. 13, 18, T. 10, R. 12; 320 a., pur. in 1879; est. val., \$6400. Graded Cattle, Berkshire Hogs, Grain and Hay. P. O., Wood River.

**M. G. Lee.**—S. 6, 7, 18, T. 10, R. 12; 200 a., pur. in 1872; est. val., \$4000. P. O., Shelton.

**Patrick Nevills.**—S. 28, 29, 33, T. 10, R. 12; 560 a., pur. in 1866; est. val., \$16,800. Berkshire and Poland China Hogs, Grain and Stock Raiser. P. O., Wood River.

**Charles Lamberson.**—S. 31, T. 10, R. 12; 280 a., pur. in 1866; est. val., \$8400. Grain and Stock Raiser. P. O., Shelton.

**John Myers.**—S. 30, T. 10, R. 12; 320 a., pur. in 1874, in state 1868; est. val., \$9600. Grain and Stock Raiser. P. O., Shelton.

**J. H. Bliss.**—S. 9, 10, T. 10, R. 12; 320 a., pur. in 1873; est. val., \$10,000. Grain and Stock Raiser. P. O., Wood River.

**A. B. Ross.**—S. 28, T. 10, R. 12; 330 a., pur. in 1860; est. val., \$10,000. Grain and Stock Raiser. P. O., Shelton.

**John Brett.**—S. 35, T. 10, R. 12; 240 a., pur. in 1881; est. val., \$7200. Grain and Stock Raiser. P. O., Wood River.

**J. T. Mehaffie.**—S. 25, 36, T. 12, R. 12; 240 a., pur. in 1877; est. val., \$7200. Grain and Stock Raiser. P. O., Loyola.

**A. R. Thorne.**—S. 4, T. 9, R. 9; 160 a., pur. in 1871; est. val., \$30 per a. Stock and Grain. P. O., Doniphan.

**Martin Ennis.**—S. 26, T. 10, R. 9; 240 a., pur. in 1873; est. val., \$30 per a. Stock and Grain. P. O., Doniphan.

**Aaron Cook.**—S. 3, T. 9, R. 9; 480 a., pur. in 1874; est. val., \$30 per a. Grain, Durham Cattle. P. O., Doniphan.

**Ezra Chesebro.**—S. 11, T. 9, R. 9; 160 a., pur. in 1877; est. val., \$30 per a. Grain and Stock. P. O., Doniphan.

**A. A. Stone.**—S. 34, T. 9, R. 9; 320 a., pur. in 1873; est. val., \$30 per a. Durham Cattle, Norman Horses, Poland China Hogs. P. O., Hansen.

**E. L. Peabody.**—S. 32, T. 9, R. 9; 80 a., pur. in 1878; est. val., \$25 per a. Grain and Stock. P. O., Hansen.

**L. S. Orcutt.**—S. 24, T. 9, R. 9; 240 a., pur. in 1873; est. val., \$30 per a. Durham Grade Cattle, Poland China and Berkshire Hogs. P. O., Hansen.

**John R. Britt.**—S. 4, T. 9, R. 10; 220 a., pur. in 1870; est. val., \$18 per a. Cattle, Hogs, Grain. P. O., Doniphan.

**Walter W. Jones.**—S. 8, T. 9, R. 10; 160 a., pur. in 1882; est. val., \$25 per a. Grain. P. O., Doniphan.

**John H. Powers.**—S. 24, T. 9, R. 10; 560 a., pur. in 1874; est. val., \$25 per a. Durham Cattle, Poland China and Berkshire Hogs. P. O., Hansen.

**L. Henry.**—S. 25, T. 9, R. 10; 320 a., pur. in 1874; est. val., \$25 per a. Durham Cattle, Poland China and Berkshire Hogs, Leicestershire Sheep. P. O., Hansen.

**L. F. Odell.**—S. 36, T. 9, R. 10; 440 a., pur. in 1876; est. val., \$25 per a. Short Horn Cattle, Grade Merino Sheep, Berkshire Hogs. P. O., Hansen.

**H. H. Bock.**—S. 20, T. 11, R. 10; 20 a., pur. in 1879; est. val., \$1,200. German Teacher in District No. 1, West End. P. O., Grand Island.

**Martin Schimmer.**—S. 36, T. 11, R. 10; 800 a., pur. in 1866; est. val., \$16,000. Thoroughbred Durham Cattle, Berkshire and Poland China Hogs; Proprietor "Sand Krog" Summer Garden. P. O., Grand Island.

**William Stolley.**—S. 28, 29, T. 11, R. 9; 240 a., pur. in 1857; est. val., \$12,000. Grain and Stock Raiser and Fruit Grower; also, Apiary. Italian and Cyprian Bees. P. O., Grand Island.

**Henry Joehneck.**—S. 15, 25, T. 11, R. 9; 320 a., pur. in 1857; est. val., \$15,000. Grain, Stock, and Fruit Grower, Vegetable Gardener. P. O., Grand Island.

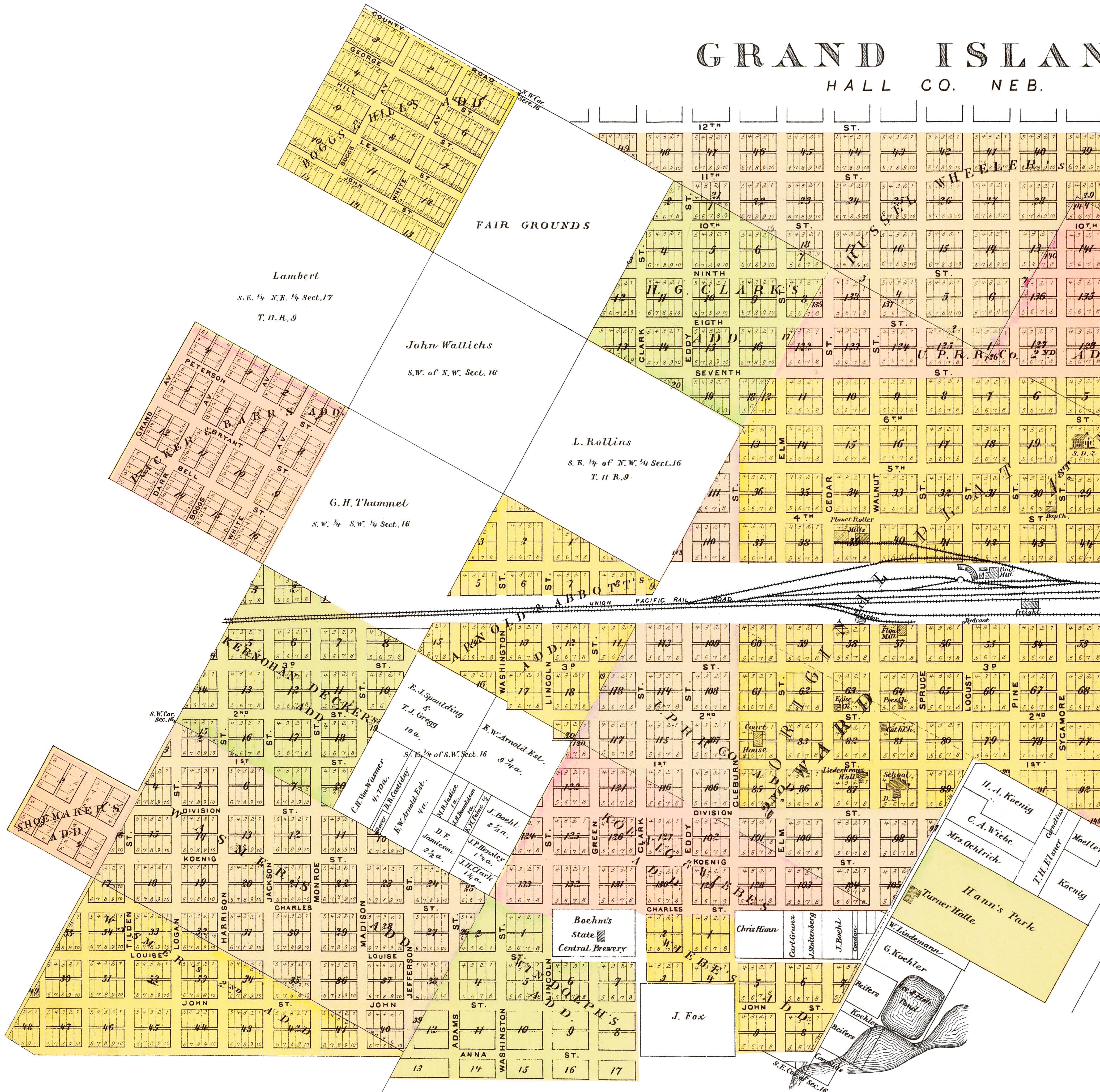
**Marx Stelck.**—S. 13, 14, 23, T. 11, R. 9; 388 a., pur. in 1857; est. val., \$20,000. Graded Durham Cattle, Grain and Fruit Grower, Berkshire and Poland China Hogs. P. O., Grand Island.

**Christian H. Menck.**—S. 14, T. 11, R. 9; 160 a., pur. in 1857; est. val., \$8,000. Graded Cattle, Poland China Hogs, Corn, Oats and Hay and Fruit Grower. P. O., Grand Island.

**J. D. Schuller.**—S. 22, T. 11, R. 9; 240 a., pur. in 1861; est. val., \$12,000. Jersey Cattle, Berkshire Hogs, Horses of the best breeds, Vegetable and Fruit Gardener. P. O., Grand Island.

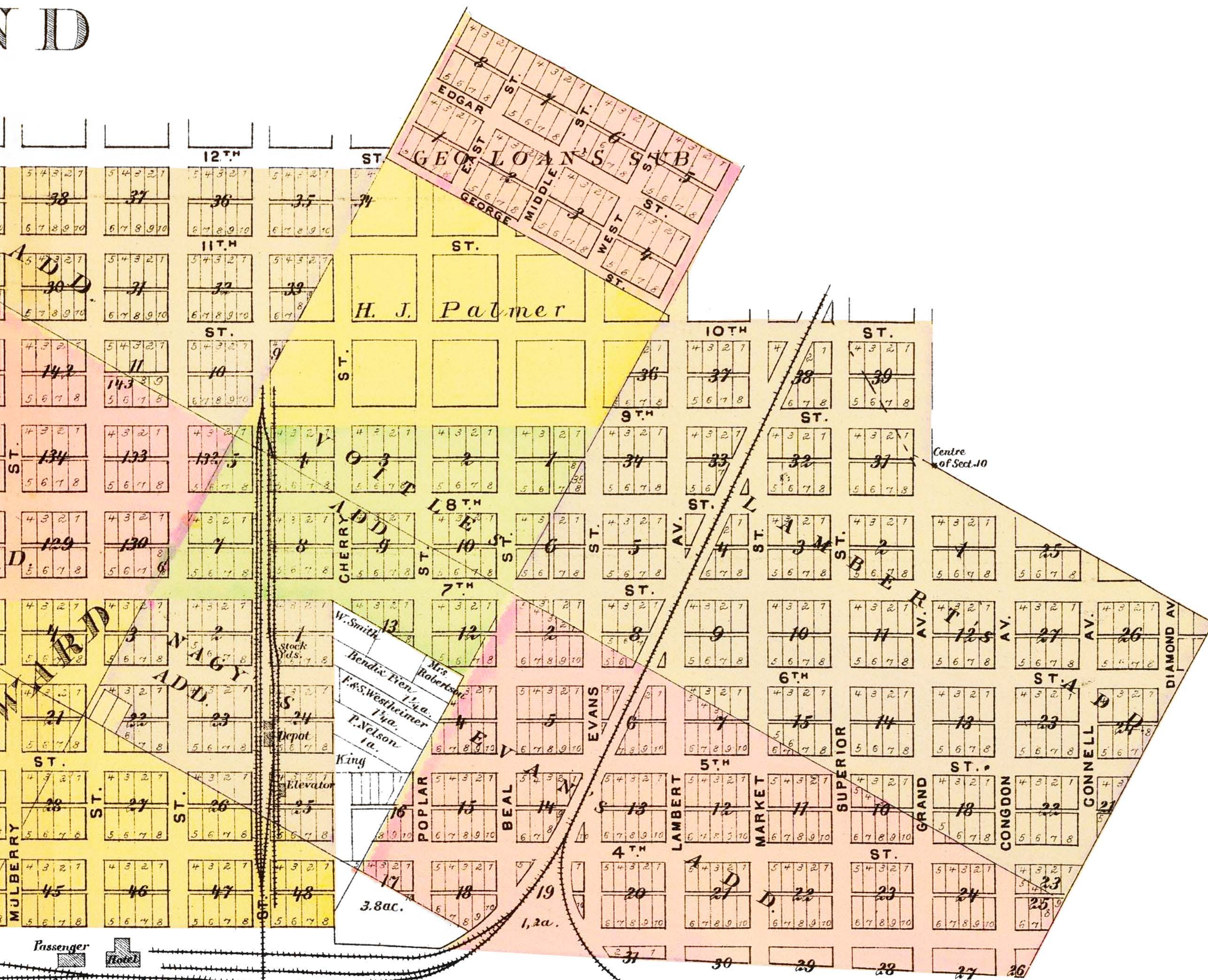
# GRAND ISLAND

HALL CO. NEB.

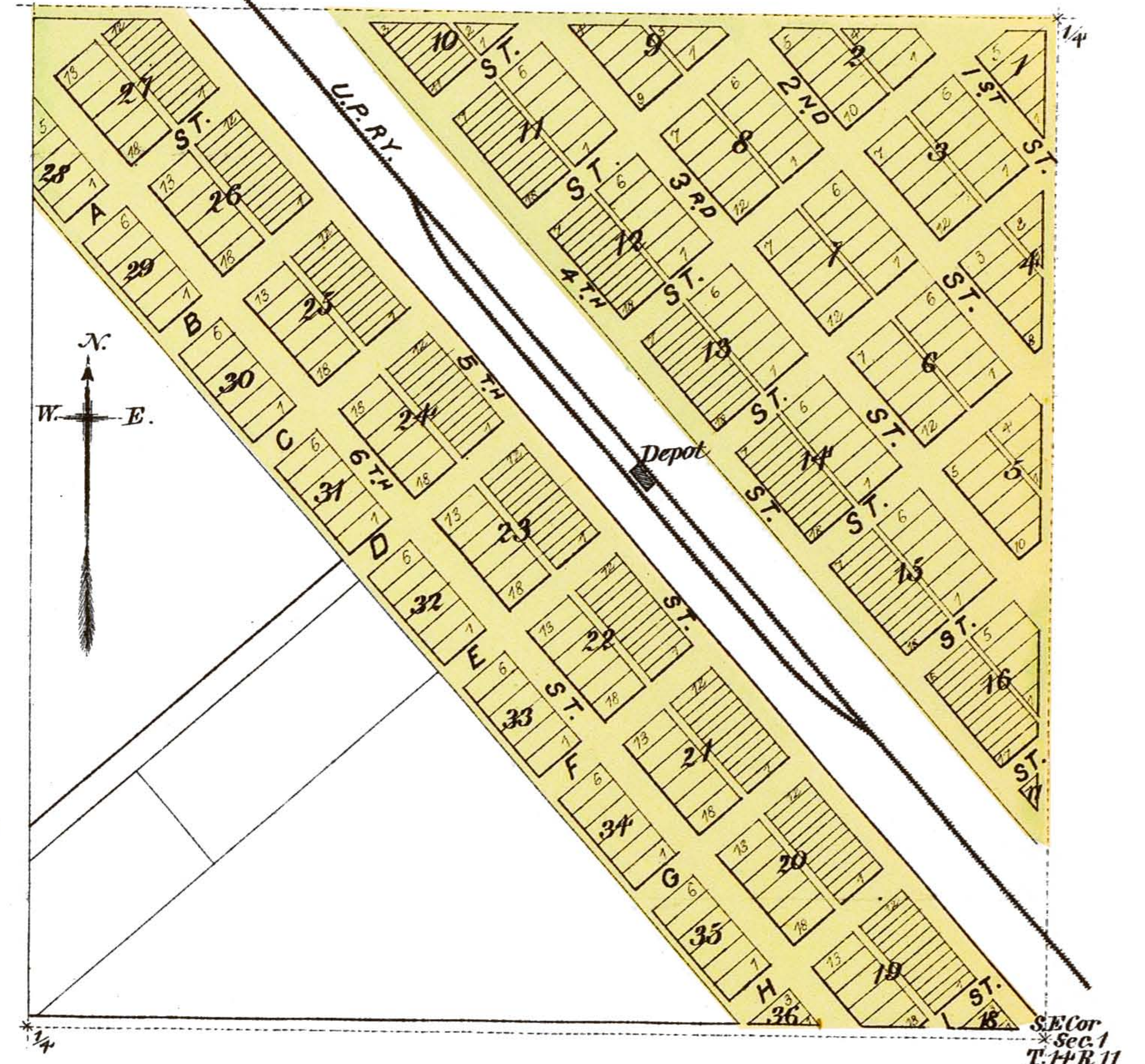




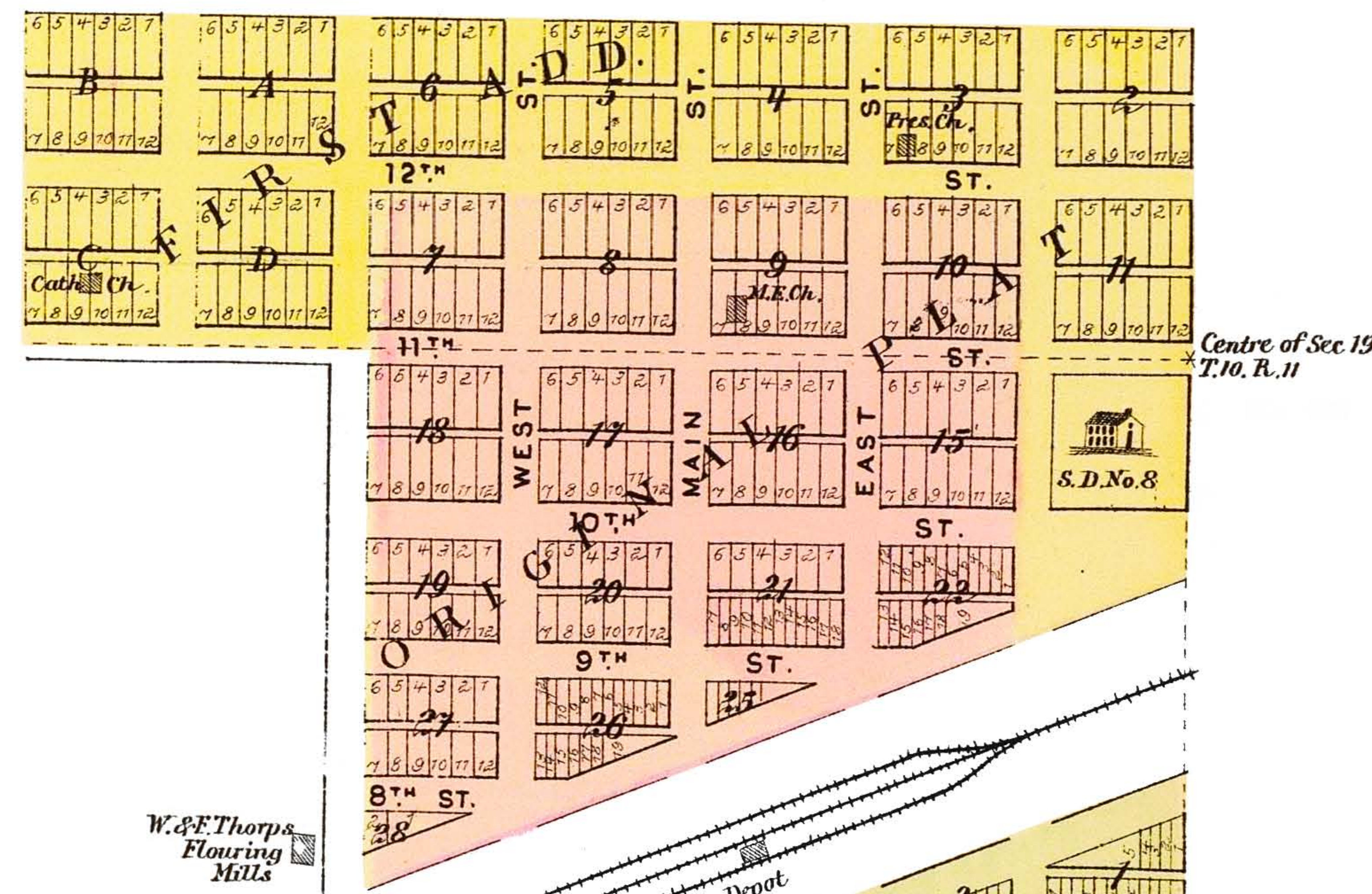
ND



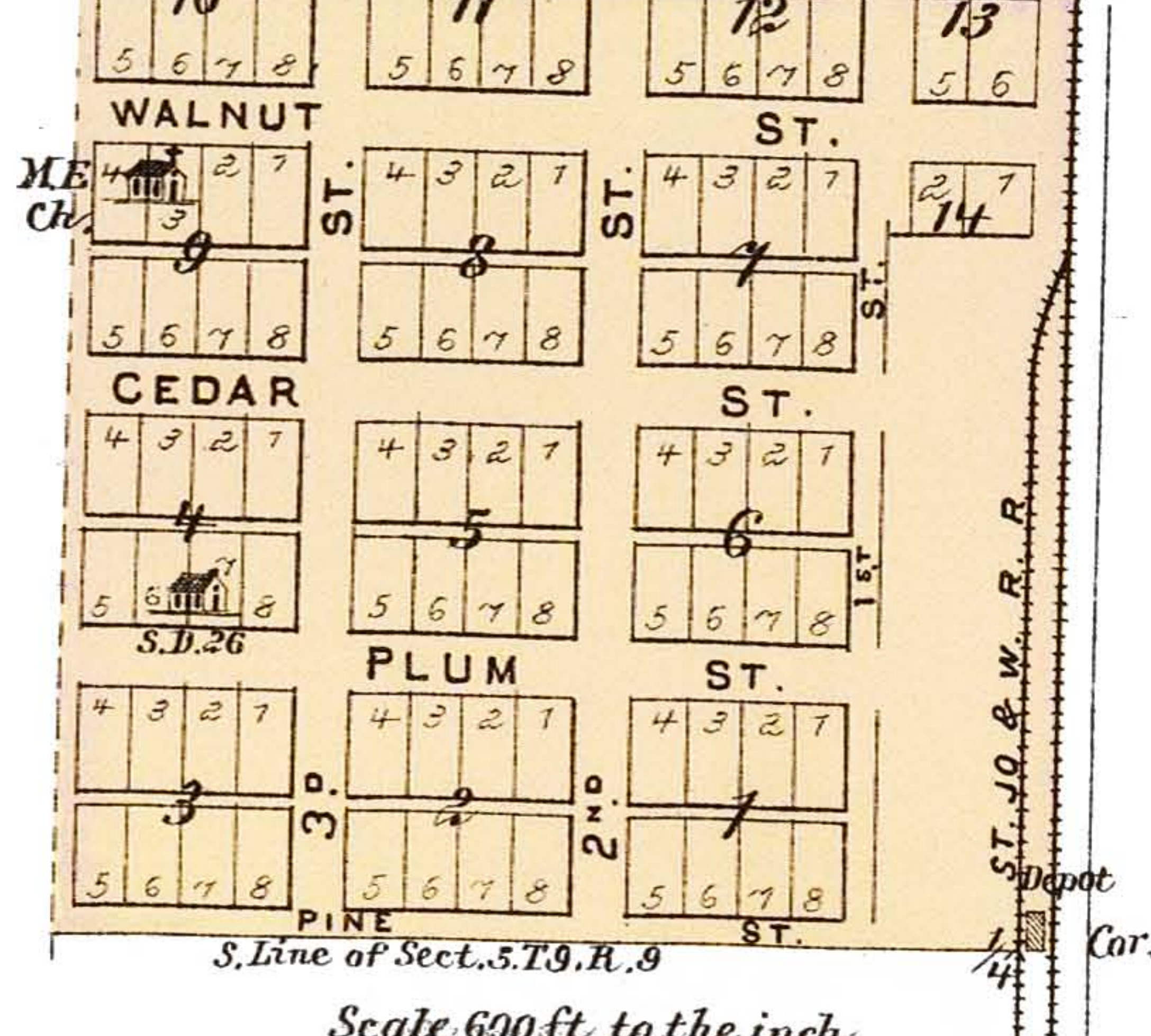
**MILLARD**  
DOUGLAS CO.  
Scale, 600 ft. to 1 in



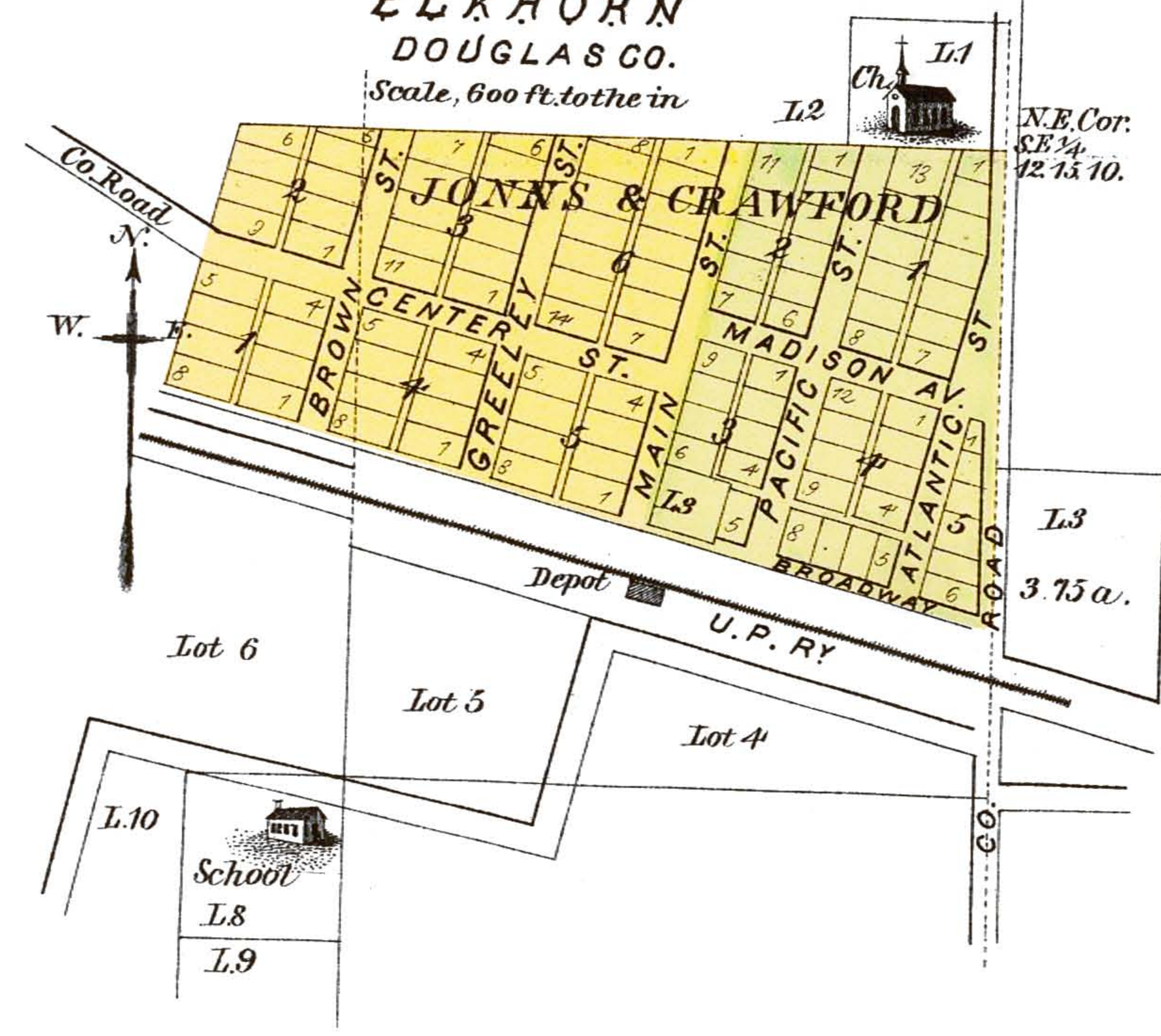
**WOOD RIVER**  
HALL CO.  
Scale 600 ft. to the inch



**DONIPHAN**  
HALL CO.



**ELKHORN**  
DOUGLAS CO.  
Scale, 600 ft. to the in



I the undersigned have examined the above map & find upon such examination that the same is very carefully compiled from the records of Hall County & to all appearances free from errors & a correct & true representation of the City of Grand Island with all her additions up to the present date

August 27<sup>th</sup> 1884  
*Chas. Ruf*

Centre of Sect. 15

NE Cor. SE 1/4 12 13 10.

L3 3.75 a.

Centre of Sect. 19 T. 10. R. 11

Cor.