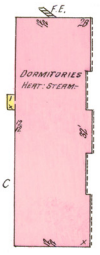
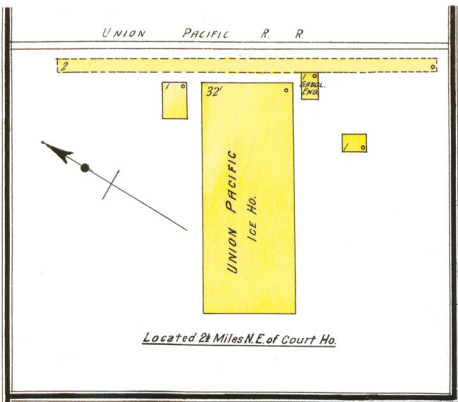
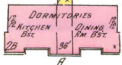
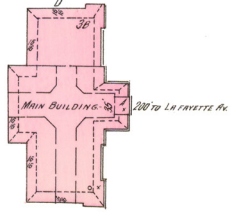


DEC. 1909
GRANDISLAND
NEB.

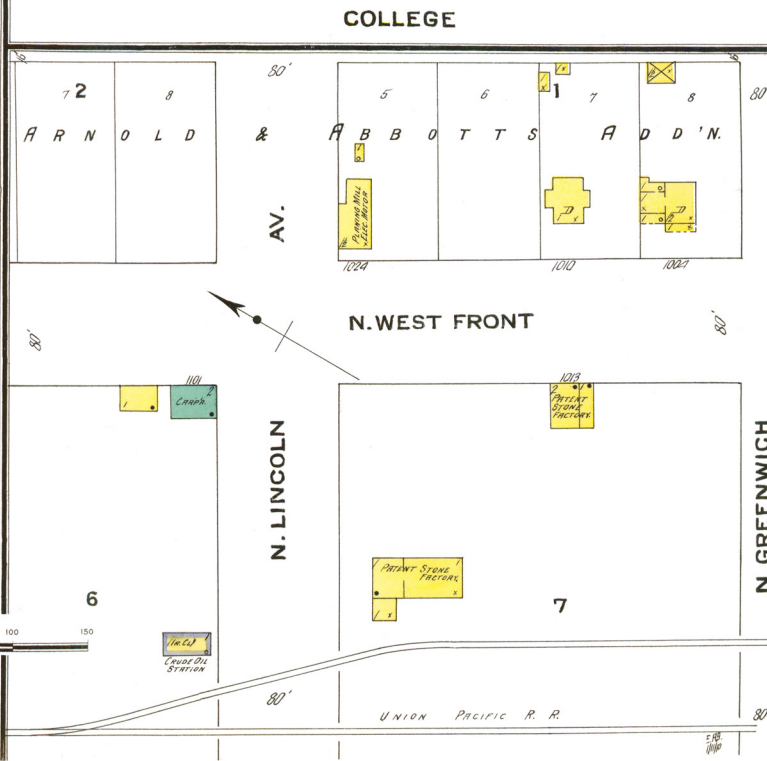


BAPTIST COLLEGE

HEAT-STEAM-LIGHT-ELECTRIC
CITY COAL-NO FIRE ARM-
PRIVATE WATER SUPPLY



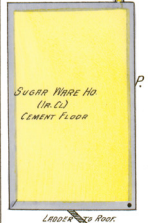
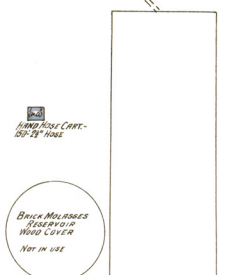
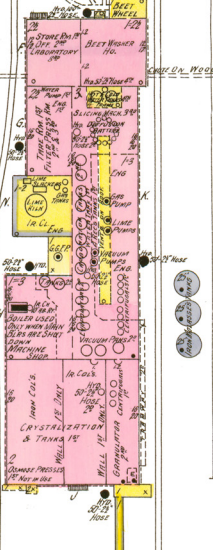
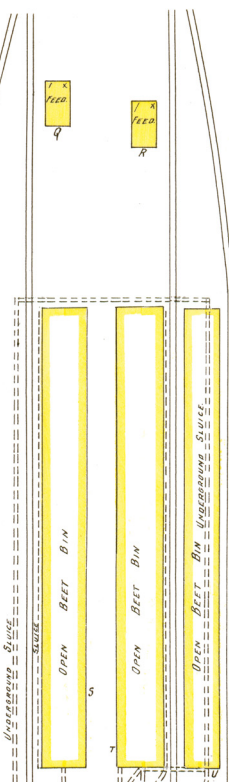
ROAD



AMERICAN BEET SUGAR CO.

CAPACITY 300 TONS OF BEETS PER DAY
 SEASON STARTS JAN. 1st RUN NIGHT & DAY
 HEAVY WATERWORKS-AMERICAN CO. COAL-
 100 TONS PER DAY-HEAVY FOUNDRY-DRY &
 SUNDAY MACHINERY WITH WORKS AND SHOP-
 BEET WATER FROM AMERICAN BEETS & SUGAR
 BY 1000 GAL. & 1000 GAL. PUMPS 25' & 50' & 75'
 CAPACITY 150000 GALLONS WATER & 100000 GALS
 FOR BEET-SUGAR-STEAM-HEATWORKS
 2 INSIDE PIPES LINED WITH 50' 2" HOSE
 WATER 50' 1" & 50' 2" BUTTERFLY VALVES
 HEAVY POWER SYSTEM-STEEL IN OFFICE-
 LIGHTS GAS-FUEL-OIL-CHIMNEY-STEAM
 DISTRICT

Located 2 1/2 Miles S.W. of Court Ho.



Scale of Feet.

