

U. S. SURVEYOR GENERAL'S OFFICE.

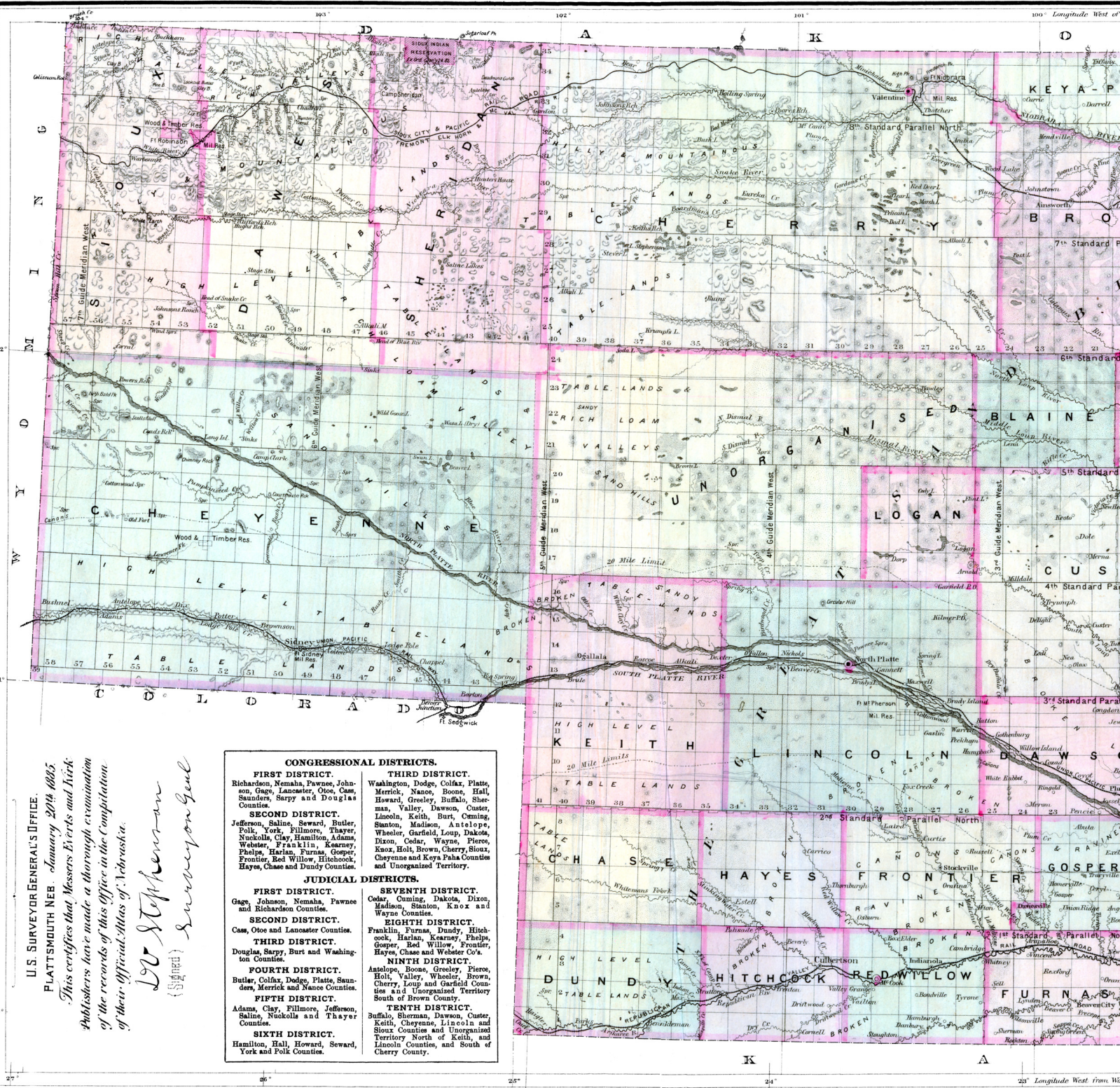
PLATTSMOUTH NEB. January 20th 1885.

This certifies that Messrs Everts and Nick Publishers have made a thorough examination of the records of this Office in the compilation of their Official Atlas of Nebraska.

*L. C. Stephenson*  
(Signed) Surveyor General

**CONGRESSIONAL DISTRICTS.**

- FIRST DISTRICT.** Richardson, Nemaha, Pawnee, Johnson, Gage, Lancaster, Otoe, Cass, Saunders, Sarpy and Douglas Counties.
- SECOND DISTRICT.** Jefferson, Saline, Seward, Butler, Polk, York, Fillmore, Thayer, Nuckolls, Clay, Hamilton, Adams, Webster, Franklin, Kearney, Phelps, Harlan, Furnas, Gosper, Frontier, Red Willow, Hitchcock, Hayes, Chase and Dundy Counties.
- JUDICIAL DISTRICTS.**
- FIRST DISTRICT.** Gage, Johnson, Nemaha, Pawnee and Richardson Counties.
- SECOND DISTRICT.** Cass, Otoe and Lancaster Counties.
- THIRD DISTRICT.** Douglas, Sarpy, Burt and Washington Counties.
- FOURTH DISTRICT.** Butler, Colfax, Dodge, Platte, Saunders, Merrick and Nance Counties.
- FIFTH DISTRICT.** Adams, Clay, Fillmore, Jefferson, Saline, Nuckolls and Thayer Counties.
- SIXTH DISTRICT.** Hamilton, Hall, Howard, Seward, York and Polk Counties.
- THIRD DISTRICT.** Washington, Dodge, Colfax, Platte, Merrick, Nance, Boone, Hall, Howard, Greeley, Buffalo, Sherman, Valley, Dawson, Custer, Lincoln, Keith, Burt, Cuming, Stanton, Madison, Antelope, Wheeler, Garfield, Loup, Dakota, Dixon, Cedar, Wayne, Pierce, Knox, Holt, Brown, Cherry, Sioux, Cheyenne and Keya Paha Counties and Unorganized Territory.
- SEVENTH DISTRICT.** Cedar, Cuming, Dakota, Dixon, Madison, Stanton, Knox and Wayne Counties.
- EIGHTH DISTRICT.** Franklin, Furnas, Dundy, Hitchcock, Harlan, Kearney, Phelps, Gosper, Red Willow, Frontier, Hayes, Chase and Webster Co's.
- NINTH DISTRICT.** Antelope, Boone, Greeley, Pierce, Holt, Valley, Wheeler, Brown, Cherry, Loup and Garfield Counties and Unorganized Territory South of Brown County.
- TENTH DISTRICT.** Buffalo, Sherman, Dawson, Custer, Keith, Cheyenne, Lincoln and Sioux Counties and Unorganized Territory North of Keith, and Lincoln Counties, and South of Cherry County.



103° 102° 101° 100° Longitude West of G

34 33 32 31 30 29 28 27 26 25 24 23 22 21 20 19 18 17 16 15 14 13 12 11 10 9 8 7 6 5 4 3 2 1

7th Guide Meridian West 6th Standard Parallel North 5th Standard Parallel North 4th Standard Parallel North 3rd Standard Parallel North 2nd Standard Parallel North 1st Standard Parallel North

5th Guide Meridian West 4th Guide Meridian West 3rd Guide Meridian West 2nd Guide Meridian West 1st Guide Meridian West

20 Mile Limits

25° 24° 23° Longitude West from Wash