

U.S. SURVEYOR GENERAL'S OFFICE.

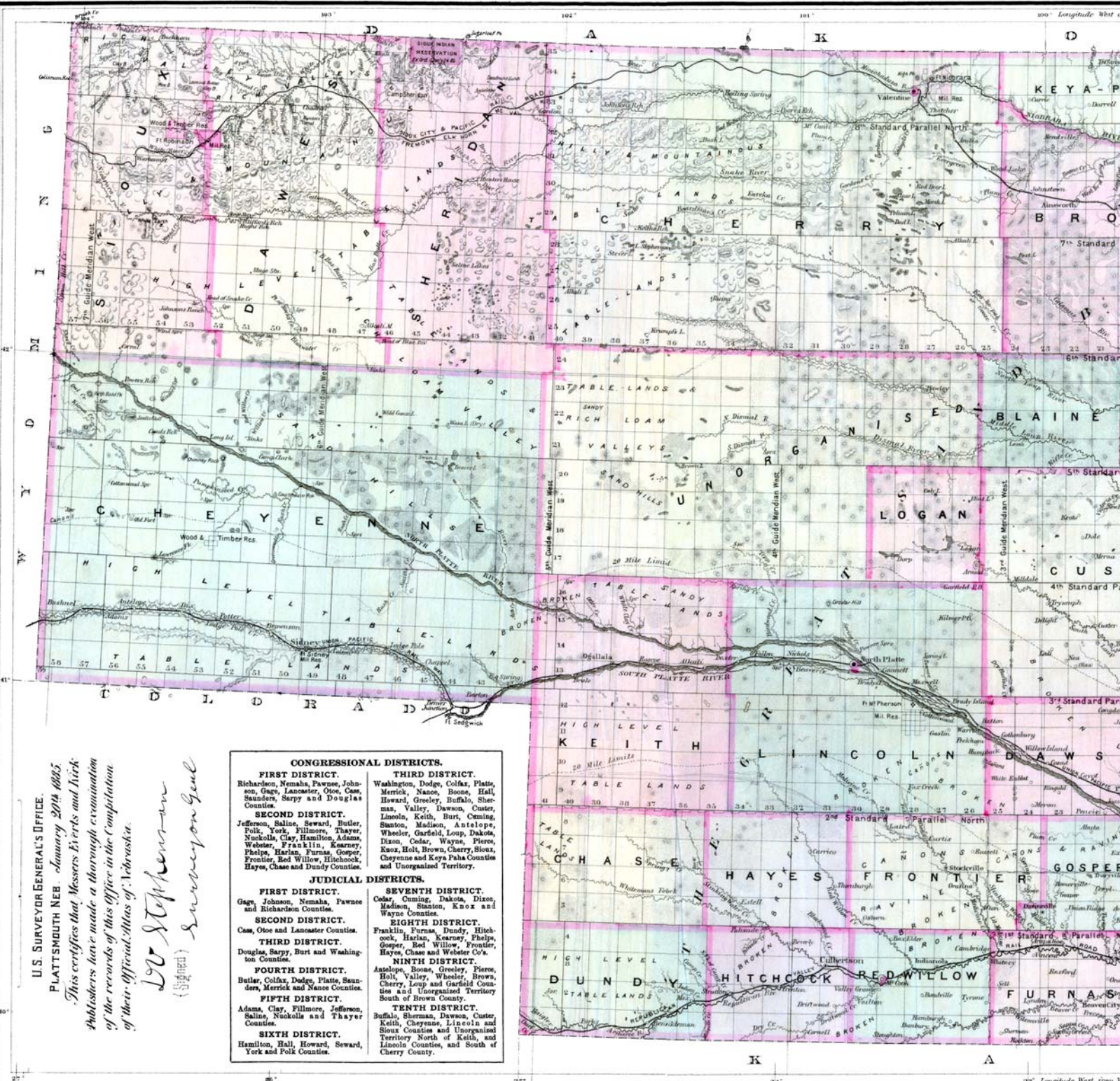
PLATTSMOUTH NEB. January 20th 1885.

This certifies that Messrs Everts and Nick Publishers have made a thorough examination of the records of this Office in the Compilation of their Official Atlas of Nebraska.

L. C. Stephenson
(Signed) Surveyor General

CONGRESSIONAL DISTRICTS.

- FIRST DISTRICT.** Richardson, Nemaha, Pawnee, Johnson, Gage, Lancaster, Otoe, Cass, Saunders, Sarpy and Douglas Counties.
- SECOND DISTRICT.** Jefferson, Saline, Seward, Butler, Polk, York, Fillmore, Thayer, Nuckolls, Clay, Hamilton, Adams, Webster, Franklin, Kearney, Phelps, Harlan, Furnas, Gosper, Frontier, Red Willow, Hitchcock, Hayes, Chase and Dundy Counties.
- JUDICIAL DISTRICTS.**
- FIRST DISTRICT.** Gage, Johnson, Nemaha, Pawnee and Richardson Counties.
- SECOND DISTRICT.** Cass, Otoe and Lancaster Counties.
- THIRD DISTRICT.** Douglas, Sarpy, Burt and Washington Counties.
- FOURTH DISTRICT.** Butler, Colfax, Dodge, Platte, Saunders, Merrick and Nance Counties.
- FIFTH DISTRICT.** Adams, Clay, Fillmore, Jefferson, Saline, Nuckolls and Thayer Counties.
- SIXTH DISTRICT.** Hamilton, Hall, Howard, Seward, York and Polk Counties.
- THIRD DISTRICT.** Washington, Dodge, Colfax, Platte, Merrick, Nance, Boone, Hall, Howard, Greeley, Buffalo, Sherman, Valley, Dawson, Custer, Lincoln, Keith, Burt, Cuming, Stanton, Madison, Antelope, Wheeler, Garfield, Loop, Dakota, Dixon, Cedar, Wayne, Pierce, Knox, Holt, Brown, Cherry, Sioux, Cheyenne and Keya Paha Counties and Unorganized Territory.
- SEVENTH DISTRICT.** Cedar, Cuming, Dakota, Dixon, Madison, Stanton, Knox and Wayne Counties.
- EIGHTH DISTRICT.** Franklin, Furnas, Dundy, Hitchcock, Harlan, Kearney, Phelps, Gosper, Red Willow, Frontier, Hayes, Chase and Webster Co's.
- NINTH DISTRICT.** Antelope, Boone, Greeley, Pierce, Holt, Valley, Wheeler, Brown, Cherry, Loop and Garfield Counties and Unorganized Territory South of Brown County.
- TENTH DISTRICT.** Buffalo, Sherman, Dawson, Custer, Keith, Cheyenne, Lincoln and Sioux Counties and Unorganized Territory North of Keith, and Lincoln Counties, and South of Cherry County.



100° Longitude West of G

25° Longitude West from Wisc