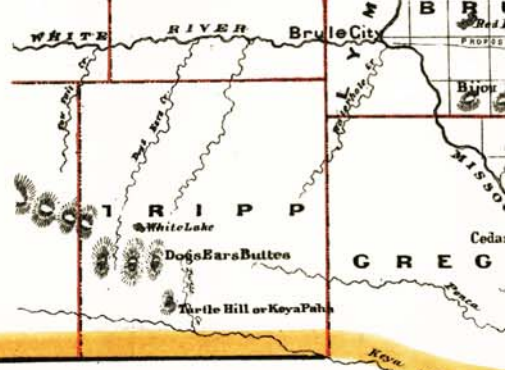


A B C D E F G H I J K

1
2
3
4
5
6
7
8
9
10
11
12
13
14
15
16

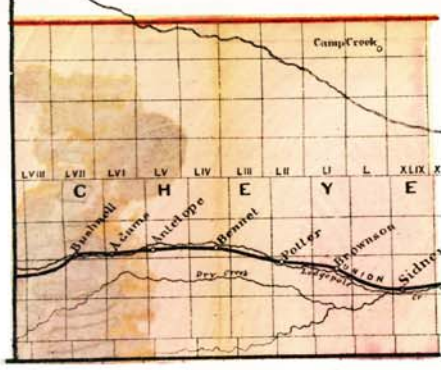
CRAM'S
Rail Road & Township Map
OF
NEBRASKA
 PUBLISHED BY
Geo. F. Cram,
 PROPRIETOR OF THE
WESTERN MAP DEPOT.
 66. Lake St. **CHICAGO, ILL.**



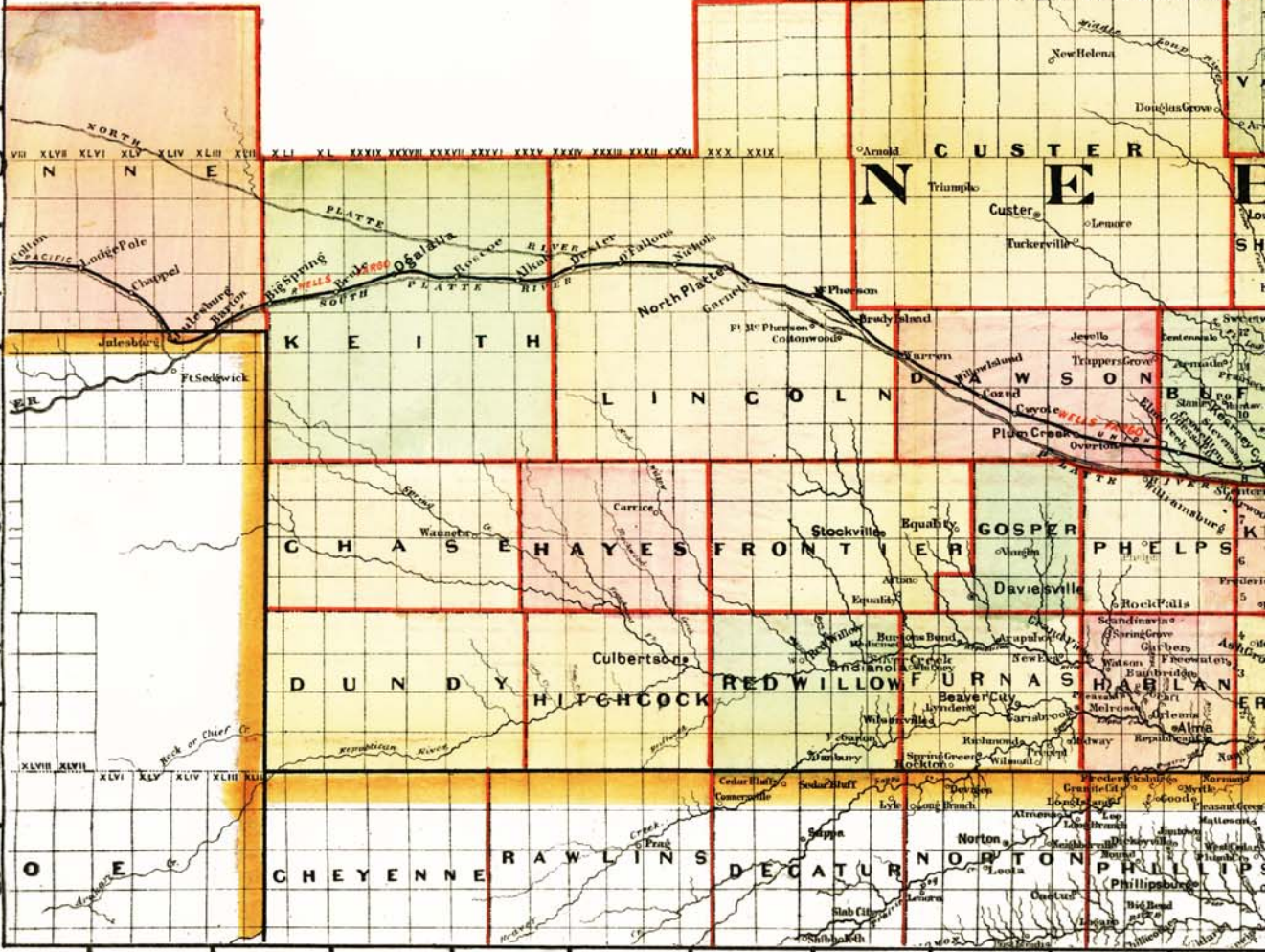
0 9 1/2 19 38 47 1/2
 Scale 19 Miles to an Inch.

Entered according to Act of Congress in the year 1878, by G. F. Cram in the Office of the Librarian of Congress at Washington, D. C.

1879.



Map Division
 SEP 19 1904
 Library of Congress



A B C D E F G H I J K